

# 2013 season Retrospective





photo L. Dittmann

First, a special thank you to all who contributed to make Jamii's 2013 season such a success: our partners and our dedicated volunteers:

Adriana M.  
Alex N.  
Amanda A.  
Amanda H.  
André D.  
Arlene F.  
Bana S.  
Charlene M.  
Cleon W.  
Darren R.  
Devin C.  
Ena

Farrial S.  
Frans S.  
Georgia R.  
Jake  
Jenn M.  
Jessie B.  
John  
Judy B.  
Kay-len  
Karen L.  
Karla G.  
Kerryn G.

Kyle M.  
Leslie W.  
Linda L.  
Marina H.  
Maysam G.  
Mel  
Michaela N.  
Mio & Kai M.  
Mumina  
Nick S.  
Raecheal G.  
Rasheed

Ray H.  
Robert V.  
Sarah A.  
Sarah S.  
Solomon M.  
Teresa G.  
Toru M.  
Trimain N.  
Tyler M.  
Yirgalem S.  
Zayna  
Zodiac F.



photo L. Dittmann

A season co-produced with



[www.corpus.ca](http://www.corpus.ca)

With the support of

Ontario  
Trillium  
Foundation



Fondation  
Trillium  
de l'Ontario

An agency of the Government of Ontario.  
Relève du gouvernement de l'Ontario.



ONTARIO ARTS COUNCIL  
CONSEIL DES ARTS DE L'ONTARIO



50 YEARS OF ONTARIO GOVERNMENT SUPPORT OF THE ARTS  
50 ANS DE SOUTIEN DU GOUVERNEMENT DE L'ONTARIO AUX ARTS

Season Partner



Season Supporters



Arts & Presenting Partners



Catwalkers Presenting Partner



ESP Basketball Tournament Presenting Partner



Season Friends

- Berkeley Castle
- Berkley Bistro
- Vital Planet
- Windmill Line Co-Op
- Woodsworth Co-Op
- Centres d'Accueil Héritage
- Toronto Community Housing

Reflections of The Esplanade Partners

Friends of Berczy Park



PIKTO®



Community Partner

St Lawrence Community Recreation Centre

Printing Partner



# Jamii

*It's about people we live with/next to, places we share, and stories we tell.*

Jamii (Swahili for “community”) is a not-for-profit organization founded by Isorine Marc in 2011. Jamii’s mandate is to enhance The Esplanade neighbourhood’s vitality by initiating and producing arts-based community-engaged projects and events. Jamii’s programming fosters a sense of pride and belonging to The Esplanade, offer opportunities for social interaction, encourage people to (re)claim ownership of our public space and contribute to empowering members of our community. Projects and events are free, open to all, and take place in or near David Crombie Park.

In 2013, Jamii received support from the Ontario Trillium Foundation for *The Esplanadians*, a 3-year initiative in partnership with CORPUS to bring community arts projects to The Esplanade. CORPUS is an award-winning Toronto-based dance/theatre company, which has performed more than 1500 times throughout the world: [www.corpus.ca](http://www.corpus.ca) In 2013, Jamii also received support from the Toronto Arts Council for *Reflections of The Esplanade*, and the Ontario Arts Council for *Catwalkers*.

## **Jamii staff:**

Isorine Marc - Volunteer Executive & Programming Director

Zoie Browne - Project Coordinator

## **Jamii Board of Directors:**

Catherine Schryer - President

Georgia Reynolds - Vice-President

André Daley-Wiltshire - Secretary

Robert Vandyke - Treasurer

Kyle Miller - Director



photo L. Dittmann

[www.jamiiesplanade.org](http://www.jamiiesplanade.org)

# Jamii 2013 Season Retrospective

## *Reflections of The Esplanade*

Photo exhibit: May-Oct // 5000+ people. Co-produced with CORPUS.

## *The Cat Came Back*

Performance at Young People's Theatre: March 12 // 50 people.

## *The Esplanadians*

Live performances (dance, theatre) + Discussion on The making of The Esplanade: May 23 & 26 // 150+ people.  
Co-produced with CORPUS.

## *ColOUR Esplanade*

Live performances (music, dance, theatre) + movie night: June 28 // 150+ people.  
Co-produced with CORPUS.

*Movie Night* - July 27 // 100 people.

## *4th Annual ESP 3-on-3 Basketball Tournament*

Tournament + photo project + concert + movie night: Aug 24 // 150+ people.

## *Patchwork Festival*

Live performances (music, dance, theatre): Sept 7 // 150+ people.  
Co-produced with CORPUS.

## *Catwalkers*

Catwalk show: Oct 5 // 600+ people. Co-produced with CORPUS.



# Reflections of The Esplanade



Exhibit at Crombie Park - photo L. Dittmann

Through a 3-month workshop from February to April, Anthony, Raecheal, Karen, Karina and Ekene, under mentorship of photographer Laura Dittmann, created from concept to realization the photo exhibit *Reflections of The Esplanade*.

The photographers expressed their personal narrative of the community they call home through the lenses of their cameras and this exhibition is their voice and vision of The Esplanade.

The exhibit first opened at Crombie Park as part of Scotiabank CONTACT, Photography Festival in May 2013 and traveled throughout the St Lawrence neighborhood during the summer: it was displayed at Berczy Park in July - in partnership with Friends of Berczy Park; at Market Lane Park in August - in partnership with the St Lawrence BIA; at the St Lawrence Library in September; and at Harmony Courtyard in October.

The youth gave tours of the exhibition at the Berkeley Castle, Berczy Park, St Lawrence Library and Harmony Courtyard.

Total tour attendance: 130

Total audience: 5000+

Co-produced Jamii/CORPUS



Anthony in action - photo L. Dittmann



Public tour at the St Lawrence Library



Pubic tour at Harmony Courtyard

Exhibit at Berkeley Castle - photo L. Dittmann



# Reflections of The Esplanade

# THE CAT CAME BACK

Young People's Theatre generously donated 50 tickets to Jamii to bring residents of The Esplanade to *The Cat Came Back* on March 12th, 2013. Co-created by Fred Penner, Jay Brazeau and Kim Selody, and based on the song Fred Penner made famous, this brand new play offered fantastical feline fun, first-rate performances and rockin' music to families from The Esplanade. Young People's Theatre is the largest Theatre for Young Audiences company in Canada and a significant institution in the Canadian professional theatre community. Its home is based on The Esplanade. [www.youngpeoplestheatre.ca](http://www.youngpeoplestheatre.ca)





# THE ESPLANADIANS

By *Michaela Novotna*  
Resident of *The Esplanade*

*The Esplanadians*, two evenings honouring the St. Lawrence/Esplanade community, were held on May 23rd & 26th, 2013 at The Berkeley Castle, one of Toronto's most beautiful outdoor spaces.

Celebrating the official launch of a 3-year commitment to "bring arts-based and engaging projects to The Esplanade community", Jamii and CORPUS, supported by the Ontario Trillium Foundation, co-produced incredible evening for the Esplanade community.

The event, with over 150 guests attending, was organized around an informal talk with the founders of The Esplanade development, David Crombie (former Mayor of Toronto, 1972-1978, who oversaw its creation), Alan Littlewood (architect responsible for the site plan), and John Sewell, (former Mayor of Toronto, 1978-1980 and prominent role in the project). Moderated by Prof. Beth Savan, University of Toronto, the panel reminisced over the big plans, fierce battles, and hilarious anecdotes that make up the development of The Esplanade.

As Crombie pointed out "Like anything else worthwhile, it took many battles. Everybody had different views on how to get it done. People get afraid of conflict, but don't be afraid of conflict. It produces energy, which produces solutions."



The making of The Esplanade - photo L. Dittmann



The making of The Esplanade- photo F. Dittmann

"At 45 acres, St Lawrence was the largest urban project ever created in North America," recalled Alan Littlewood. "We looked at all the land south of Front Street which was then auto wrecking, demolition, cold storage...a total mess, and decided that we should try to do a really big development and make it part of the city," added Sewell. "We needed a living vibrant downtown. St Lawrence became the flagship of building new neighbourhoods," closed Crombie.

All three agreed that the long, linear Crombie Park, stretching along The Esplanade is one of the significant successes of the neighbourhood. It made sense because every part of the neighbourhood was guaranteed a piece of the park. It was a visual linkage throughout the length of the neighbourhood.

But park space alone does not make a strong community. Littlewood stressed, "You need basic principles of planning. Extend the street, make it part of the city, build neighbourhoods not projects, and most importantly make sure it's a mix: mixed income, mixed family types, mixed housing. And keep developments small."

"Co-ops are another determining characteristic of the St. Lawrence neighbourhood," says David Crombie. "Using private/public co-ops create a sense of community that is lacking in other projects. Co-ops are crucial to success." Influenced by the vision of Toronto's Jane Jacobs, a world-leading urban design critic, The Esplanade plan was founded on sound principles and continues to serve as a model for healthy, vibrant urban development.

Jamii's Executive & Programming Director, Isorine Marc, says her organization is as much about the future as it is about history. The weekend events featured an exhibition of photographs taken by local youth as part of the CONTACT Photography Festival. After two months' of instruction through a Jamii art program taught by local photographer Laura Dittmann, five youth photographed, curated and printed an exhibition to express their own sense of neighbourhood. These striking photographs have been displayed in Crombie Park throughout May and were presented officially at The Esplanadians event.

CORPUS, a Toronto dance/theatre company that has been putting up whimsical and surprising performances in Crombie Park throughout the last two years, returned to entertain with the dreamy *Nuit Blanche* as well as their new *Camping Royale*.

Both the performances and the art exhibition had a strong theme of the life lived outside (Sleepwalkers fulfilling their dreams in meandering sleeping bags to a cricket-chirping background, Queens forging friendships in tents while braving the trials of camping, and photographs of the neighbourhood mirrored in sky-filled storefront windows). This idea of home outdoors resonated suddenly as I left the event and stepped out of the nestled grassy nook within The Berkeley Castle, onto the quiet evening street of the tree-lined Esplanade, and back home through my co-op's shared courtyard.

If you missed the event, both CORPUS and Jamii have outdoor performances, programs, and public events in the works for the next three years. And since life on The Esplanade is enjoyed best outside, we'll see you at Crombie Park!



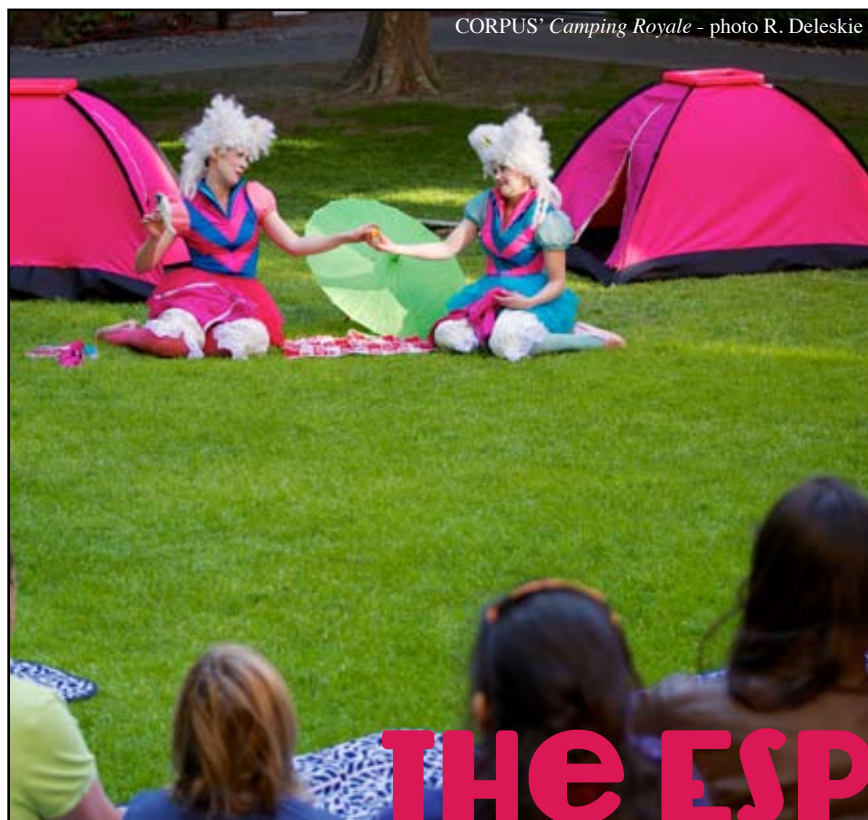
CORPUS' *Nuit blanche* - photo R. Deleskie



Reflections of The Esplanade's photographers - photo L. Dittmann



CORPUS' *Nuit blanche* - photo R. Deleskie



CORPUS' *Camping Royale* - photo R. Deleskie



photo L. Dittmann

# THE ESPLANADIANS

# THE SECRET WORLD OF ARRIETTY



# THE SECRET WORLD OF ARRIETTY

By Isorine Marc  
Executive & Programming Director

While in Japan, during a walk in the mountains, I was thinking of *Spirited Away*, which we screened in 2012, and could fully grasp the imaginary world described in Japanese animated films: the wind creating waves in rice fields, the forest of bamboos transforming in gigantic creatures, the mysterious wooden houses, writings encrypted in stones on the side of the road, colourful shrines...

In the spirit of sharing this experience, we brought ***The Secret World of Arrietty*** to The Esplanade. The film was directed by Hiromasa Yonebayashi and was based on Mary Norton's novel *The Borrowers*. It won the Animation of the Year award at the 34th Japan Academy Prize award ceremony.

July 27th, 2013

Total audience: 100+



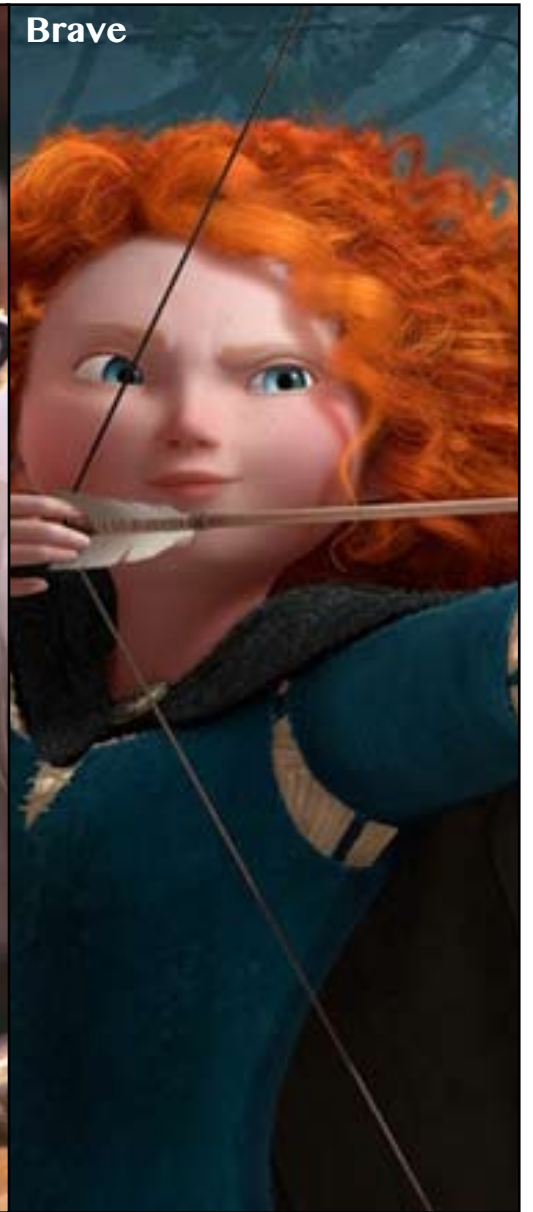
Domanique Grant



Les moutons



Brave



COLOUR Esplanade

# COLOUR Esplanade

CORPUS' *Les moutons* - photo N. Spector



With The Toronto Arts Foundation commending her for making significant contributions to the City of Toronto through the Arts and Culture, Domanique Grant is an artist making waves. Known for her ability to captivate audiences, with her soothing vocal tone and dynamic stage presence, it's Domanique's ability to push the boundaries of live performance, with intricate genre and instrument arrangements that truly make each performance distinct. On The Esplanade, Domanique was accompanied by Avery Levin-Gold, Kimiko Suzuki and Vennie Tu. Domanique's alluring voice and vocal inflections left the audience in aw. [www.domaniquegrant.com](http://www.domaniquegrant.com)



Domanique Grant - photo L. Dittmann

CORPUS' *Les moutons*, conceived by David Danzon and Sylvie Bouchard, came back to our park for one memorable performance by Anika Johnson, Emily Poirier, Takako Segawa, Matt O'Connor and Robert Feetham. The company left the following day to tour Japan's children theatre festivals. It was an honour to have the sheep once again in our park! [www.corpus.ca](http://www.corpus.ca)

The evening ended with a screening of *Brave* (Disney Pixar). The film, directed by Mark Andrews, Brenda Chapman and Steve Purcell, follows Princess Merida's determination to make her own path in life. An inspiring movie for many of us.

Total attendance: 150+  
Co-produced Jamii/CORPUS



CORPUS' *Les moutons* - photo L. Dittmann

# 4th Annual ESP 3-on-3 BasketBall Tournament



photo: N. Spector

# 4th Annual ESP 3-on-3 Basketball Tournament

By Isorine Marc  
Executive & Programming Director

The annual 3-on-3 basketball tournament is a very special event for our community: we're proud to have partnered, once again, with the Esplanade Community Group and ESP Girls Group to organize the 4th edition on August 24th.

I started helping the Esplanade Community Group with the organization of this tournament for their second edition in 2011. I have always been impressed by how organized and dedicated to our community the Esplanade Community Group and the ESP Girls Group are. It's all about young adults who grew up on The Esplanade and who want to make a difference for the next generation: they inspire me.

Our partnership has grown over the years and in 2013 Jamii brought to the tournament a concert with Chris Hercules & Band as well as an outdoor movie night (*Space Jam*).

Ahead of the tournament, Chris led a spoken word workshop to 4 young creative girls (Scarlett, Mumina, Jodan and Kizzy) who then performed their poems in front of the crowd.

We also organized a series of photo workshops with photographer Nick Spector to teach five youth (Mio, Kai, Jodan, Eden & Jennaiya) the basics of documentary photography. They took amazing pictures of the tournament and concert that we hope to display next year.

Total audience: 150+





# Patchwork Fest

Walking, Dancing & Biking pieced together



# Patchwork Fest



Kae Sun - photo L. Dittmann

On Sunday, Sept 8th, The Esplanade residents of all ages gathered in Crombie Park for another day of live theatre, dance and music. Patchwork Fest, in partnership with the Toronto Bicycle Music Festival ([www.torontobicyclemusicfestival.com](http://www.torontobicyclemusicfestival.com)) & the Princess Margaret Foundation 'End Cancer Walk', pieced together the physical activities of biking and walking with arts and community engagement.

The afternoon began with Caldwell's *The Horologium* and Throwdown Collective's *1981 FM*. Two whimsical dance theatre pieces that captured the attention of children of all ages.

Kae Sun later opened the Toronto Bicycle Music Festival with a soothing fusion of soul; reggae and hip-hop that the crowd enjoyed while sharing food at the ESP Potluck Picnic.



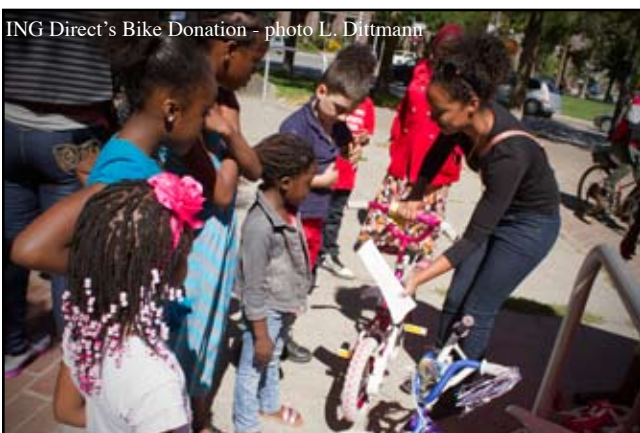
Throwdown collective's *1981 FM* - photo L. Dittmann

The event concluded with ING DIRECT distributing refurbished bikes to 10 of our youths as part of the Great Bike Recycle program. [www.ingdirect.ca](http://www.ingdirect.ca)

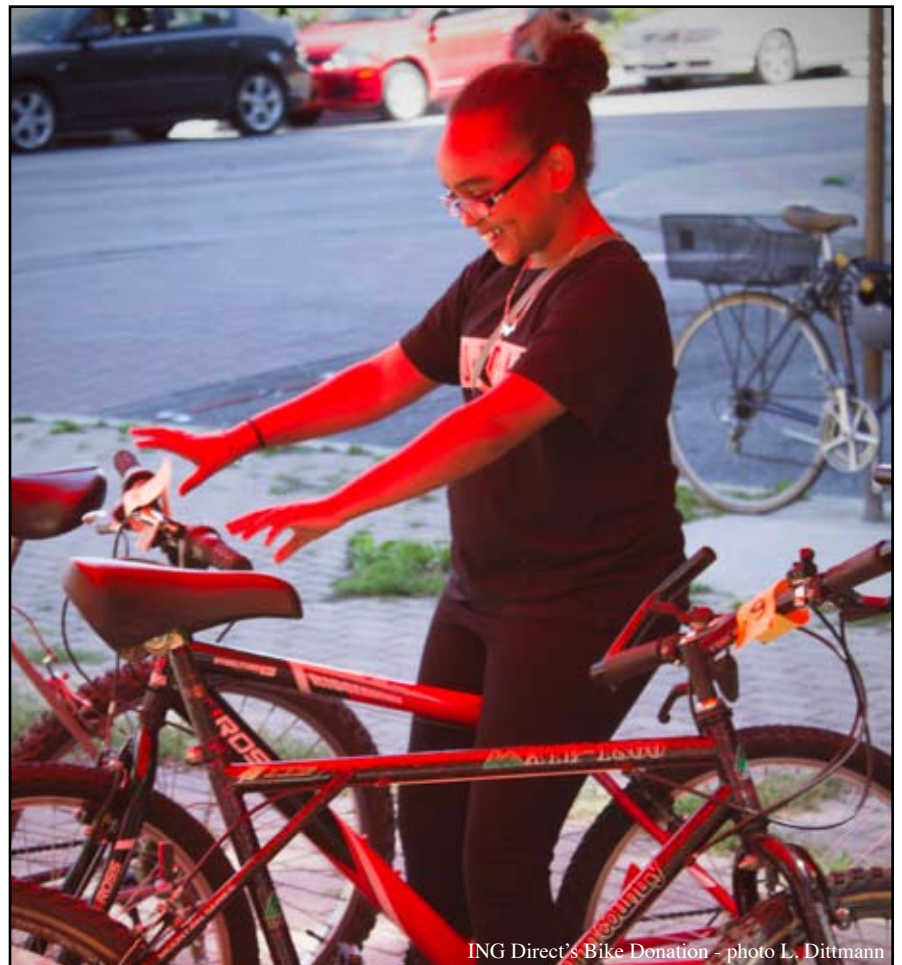
Total audience: 150+  
Co-produced Jamii/CORPUS



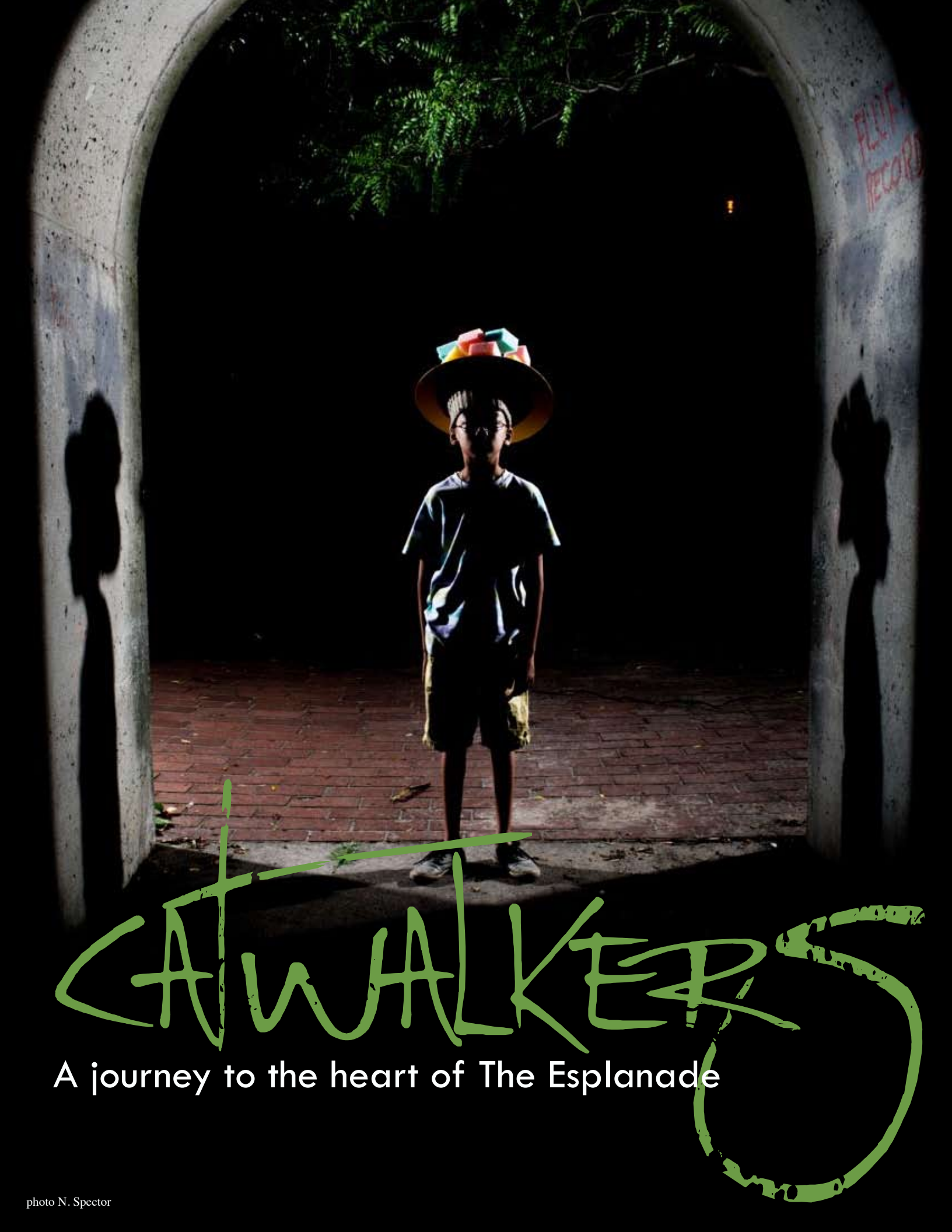
Michael Caldwell's *The horologium* - photo L. Dittmann



ING Direct's Bike Donation - photo L. Dittmann



ING Direct's Bike Donation - photo L. Dittmann



FLUOR  
RECORD

# CATWALKER

A journey to the heart of The Esplanade

# CATWALKERS

When conceptualizing Jamii's 2013 season, I had a strong desire to include a project where women from The Esplanade community could take part in an artistic project leading to a public presentation. I heard of a community project in France where a group of women designed a line of clothing and had their daughters wearing them during a Catwalk Show. This idea resonated in me: I could only imagine the pride of those mothers watching their daughters shining on the catwalk wearing clothing they would have made themselves, and I could see the whole community coming out for this special occasion. This is how Catwalkers came about.

Isorine Marc  
Executive and Programming Director

*Catwalkers*, co-produced by Jamii and CORPUS, is a project designed, staged and performed by both professional artists and community members from The Esplanade. Co-curated by Isorine Marc and Catherine Sicot (Elegoa Cultural Productions [www.elegoa.com](http://www.elegoa.com)).

From May to October, six committed women from The Esplanade - Teresa McGeachie, Rosie Fernandez, Marina Hanacek, Judy Browne, Carol Auld & Kerryn Graham - have been working with artist Anne Fauteux on the creation of a collection of wearable pieces. This unique collection pushed traditional boundaries of the fashion industry by creating outfits that were playful and stimulated interaction between people and urban space. Designers have used recycled material referring to sustainable and creative ways of living.

The collection was presented for the first time to an audience of 600+ as part of *Catwalkers' Show*, a choreographed site-specific performance featured during Scotiabank Nuit Blanche (Saturday, Oct 5th 2013). Choreographer Michael Caldwell worked with about thirty diverse models - members of The Esplanade community - on the creation of this performance. *Catwalkers' Show* took the audience on a journey to the heart of The Esplanade.



photo L. Dittmann



photo L. Dittmann



photo L. Dittmann



photo L. Dittmann

[www.jamiiesplanade.org](http://www.jamiiesplanade.org)